

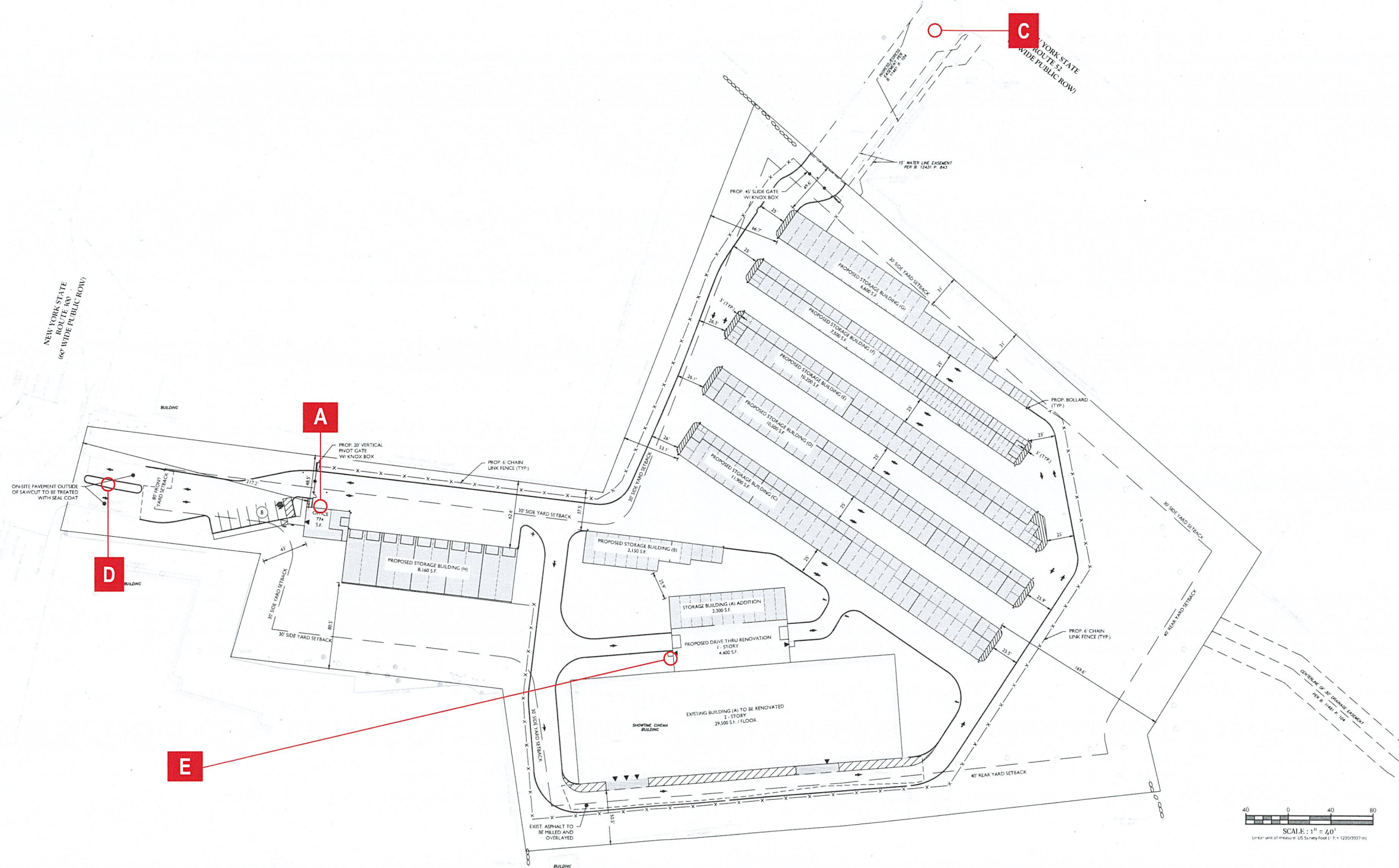
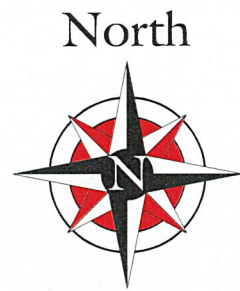


1420 NY-300, Newburgh, NY 12550

5 YEAR
WARRANTY
ALL PARTS, LABOR
& SIGNAGE

 **Signdealz**[®]
GREAT SIGNS AT GREAT PRICES

Site Map



Signdealz
2301 Blake Street
Denver, CO 80205

1-800-405-0686

CUSTOMER NAME:	Budget Store & Lock	
PROJECT NAME:	Sign Package	
LOCATION:	1420 NY-300, Newburgh, NY 12550	
OPPORTUNITY / P.O. NO(*):	OP-KS-008617	SALES Kirk Stateson
DATE:	10/15/2024	

DESIGNER
KP

PAGE 3

APPROVAL:

Customer Signature (legible)

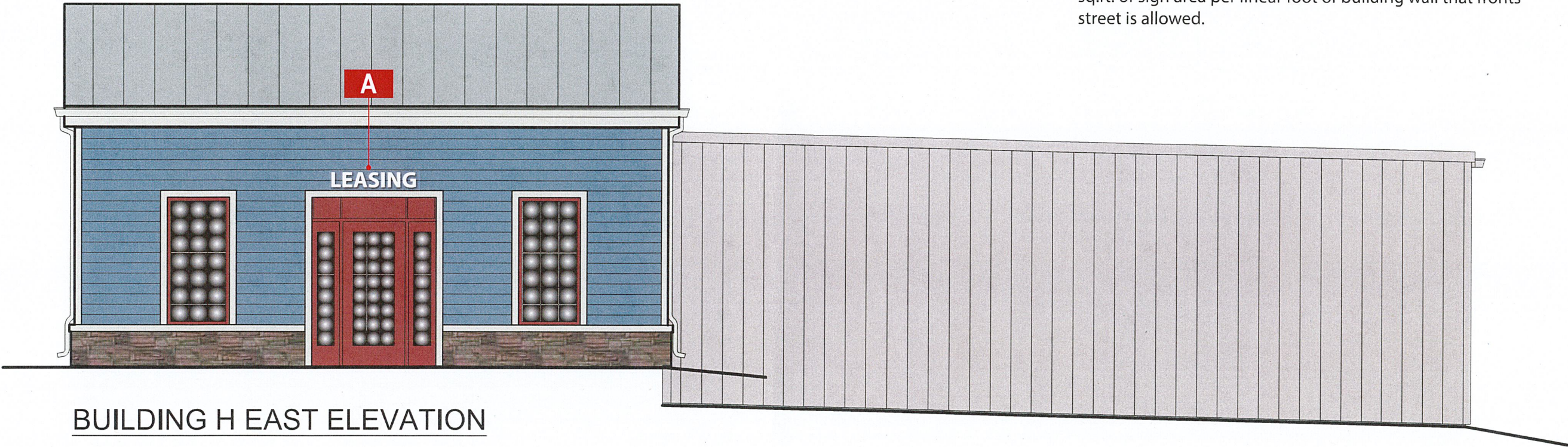
(X)

Approval Date:

5 YEAR WARRANTY
ALL PARTS, LABOR & SIGNAGE

Town of Newburgh, NY - Zoning IB:

- Wall sign
- No limit on number of wall signs
 - Max sign area on main frontage wall 110 SF
 - Sign must be placed below roof line
 - Sign can be illuminated.
 - If there is a freestanding sign on the site, then one sq.ft. of sign area per linear foot of building wall that fronts street is allowed.



Sign Details

Scale: 3/16" = 1'-0"

SIGN A

FCO Acrylic Letters

1/2" Acrylic panel, painted white
No visible fasteners on face

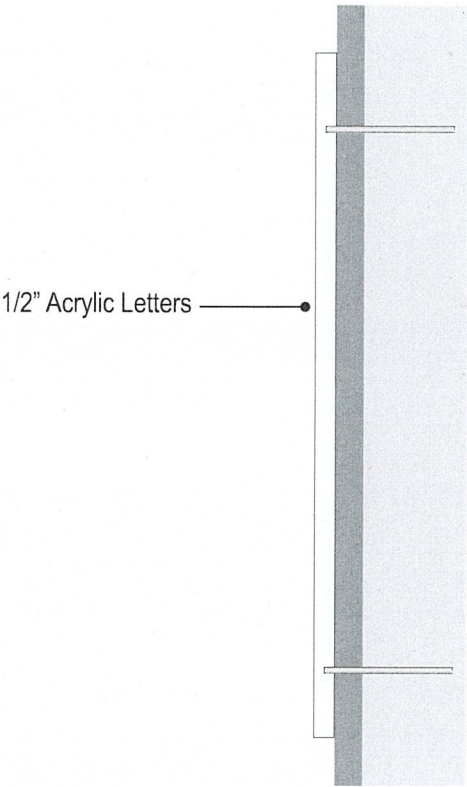
Attachment: Flush mounted with 1/4" studs & silicone



Qty = 1 Sign Area = 2.93 sq. ft.

Sign Details

Scale: 1 1/2" = 1'-0"



Typical Section

Scale: NTS

**Signdealz**
GREAT SIGNS AT GREAT PRICES

Signdealz
2301 Blake Street
Denver, CO 80205
1-800-405-0686

CUSTOMER NAME: Budget Store & Lock	
PROJECT NAME: Sign Package	
LOCATION: 1420 NY-300, Newburgh, NY 12550	
OPPORTUNITY / P.O. NO(#): OP-KS-008617	SALES: Kirk Stateson
DATE: 10/15/2024	

DESIGNER
KP
PAGE 5

APPROVAL:

Customer Signature (legible)

(X)

Approval Date:

5 YEAR WARRANTY

ALL PARTS, LABOR & SIGNAGE

SIGN C

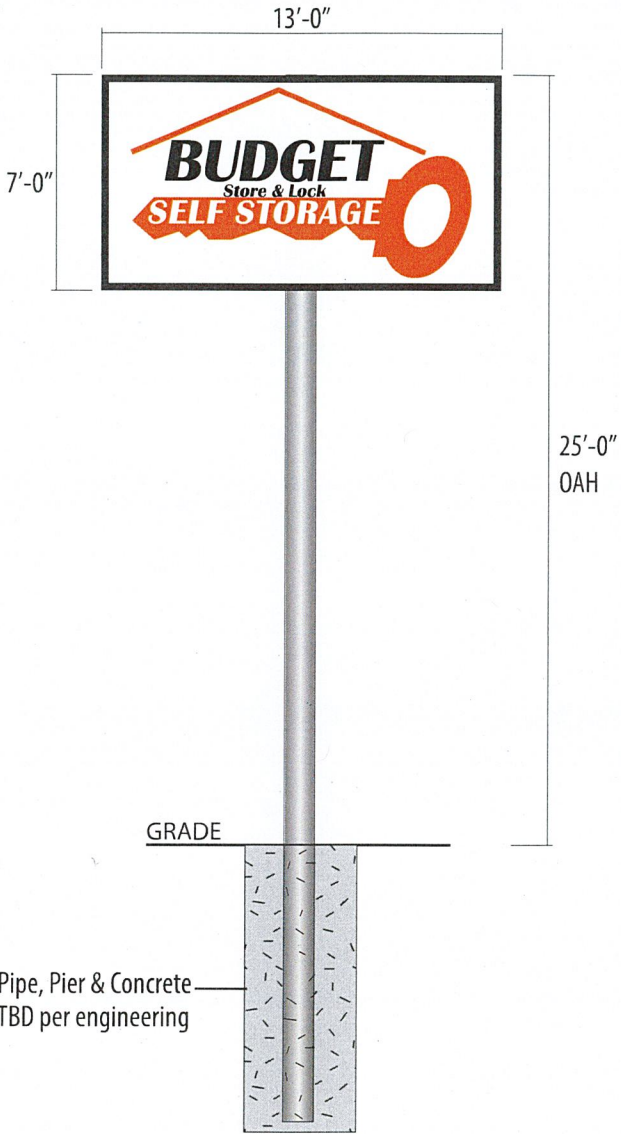
SPECIFICATIONS

- Aluminum cabinet, ptd black
- Flex faces with printed graphics
- LED Lighting, bright white
- Steel support pole (size TBD per engineering)
- NOTE: Final graphics subject to change

SCOPE OF WORK

- Remove existing sign (cut down at grade)
- Drill new hole for new foundation
- Set new pipe in hole with concrete
- Install new sign on pipe
- Connect to existing power

SIGN AREA = 91 Sq. Ft.



Updated Conditions

Existing Sign Size: 1'-9" x 8'-2"
Sign Area = 14.3 Sq. Ft.



Existing Conditions

Sign Details

Field verify dimensions and substrate prior to fabrication

Scale: NTS



Signdealz
2301 Blake Street
Denver, CO 80205

1-800-405-0686

CUSTOMER NAME: Budget Store & Lock	
PROJECT NAME: Sign Package	
LOCATION: 1420 NY-300, Newburgh, NY 12550	
OPPORTUNITY / P.O. NO (P): OP-KS-008617	SALES: Kirk Stateson
DATE: 10/15/2024	

DESIGNER
KP

PAGE 11

APPROVAL:

Customer Signature (legible)

(X)

Approval Date:

5 YEAR WARRANTY
ALL PARTS, LABOR & SIGNAGE

SIGN D

SPECIFICATIONS

- Aluminum cabinet, ptd black
- Flex faces with printed graphics
- LED Lighting, bright white
- Steel support pole (size TBD per engineering)
- Note: Final graphics subject to change

CODE REVIEW:

Town of Newburgh, NY - Zoning IB:

Freestanding sign

- One freestanding sign allowed per tenant
- Max sign area 250 SF
- Max height 35 FT.
- Max single face area 150 SF.
- Setback 15 FT.
- Can be illuminated and have LED display.

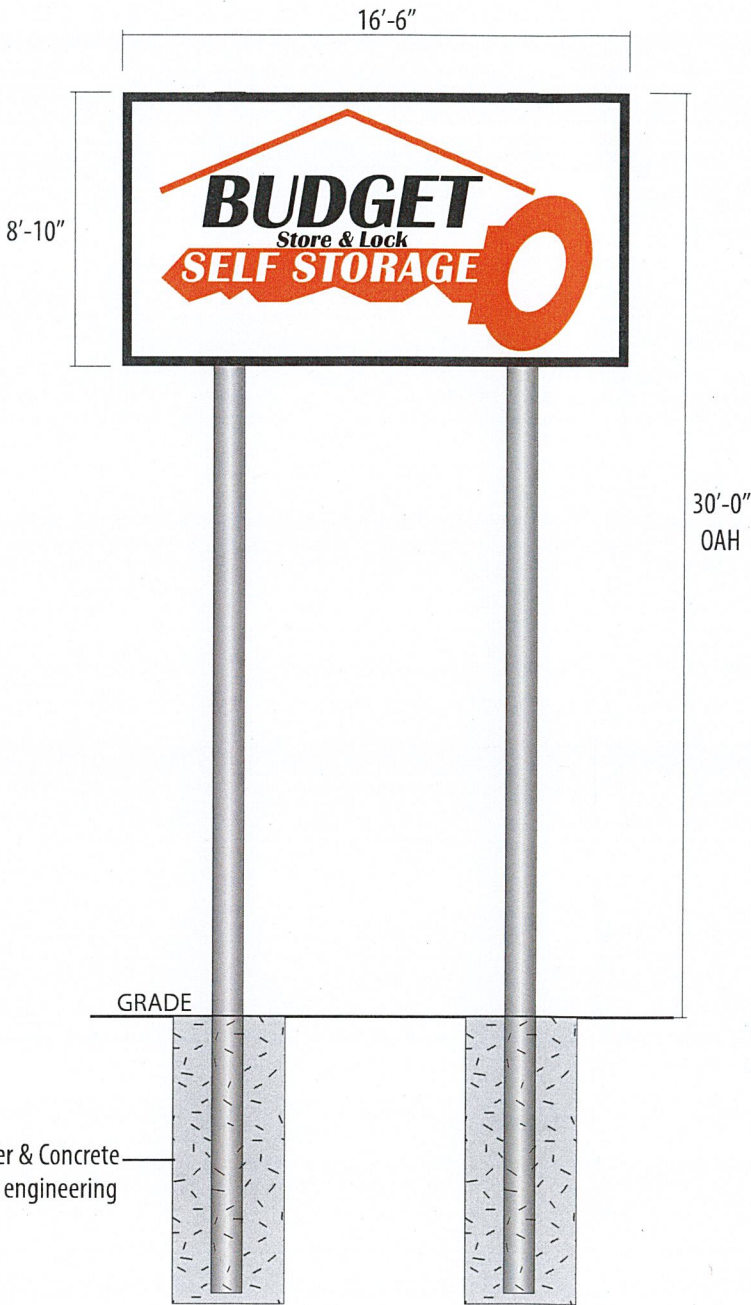
Electronic Message Board

- Allowed one per tenant.
- Max sign area 125 SF or 50% total sign area.
- No animation allowed.

SCOPE OF WORK

- Remove existing sign (cut down at grade)
- Drill new hole for new foundation
- Set new pipe in hole with concrete
- Install new sign on pipe
- Connect to existing power

SIGN AREA = 145.75 Sq. Ft.



Existing Conditions

Existing Sign Size: 2'-8" x 14'-8"
Sign Area = 39.11 Sq. Ft.

Sign Details



Updated Conditions

Scale: NTS

Field verify dimensions and substrate prior to fabrication



Signdealz
2301 Blake Street
Denver, CO 80205

1-800-405-0686

CUSTOMER NAME: Budget Store & Lock	
PROJECT NAME: Sign Package	
LOCATION: 1420 NY-300, Newburgh, NY 12550	
OPPORTUNITY / P.O. NO (#): OP-KS-008617	SALES: Kirk Stateson
DATE: 10/15/2024	

DESIGNER
KP

PAGE 13

APPROVAL:

Customer Signature (legible)

(X)

Approval Date:

5 YEAR WARRANTY
ALL PARTS, LABOR & SIGNAGE

SIGN E

Standard flush mounted, face lit channel letters

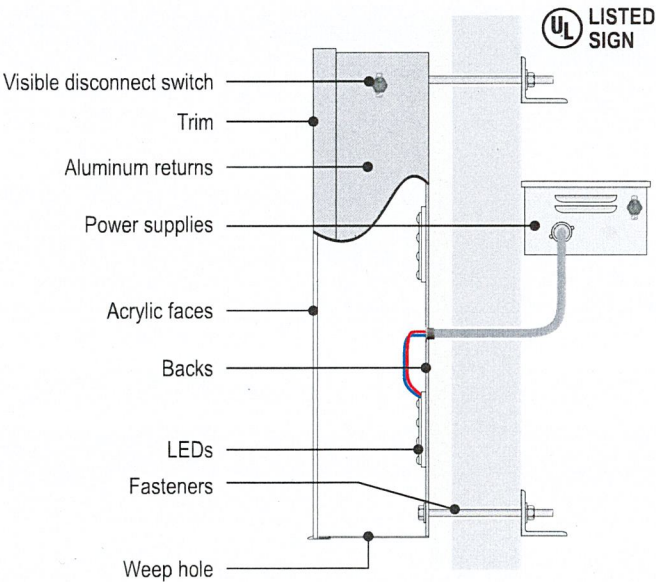
- 3/16" white acrylic faces
- 1" trim, black
- 5" deep .040" aluminum returns, black
- 3mm ACM or .063" aluminum backs
- Internally illuminated with white LEDs

Attachment: 3/8" all thread bolts, 3-4 per letter typical
Exact attachment as per field conditions / code requirements

Electrical: Include photocell, GC to make electrical connection
Load: 2A at 120V, Power requirement: 20A dedicated circuit

Town of Newburgh, NY - Zoning IB:

- Wall sign
- No limit on number of wall signs
 - Max sign area on main frontage wall 110 SF
 - Sign must be placed below roof line
 - Sign can be illuminated.
 - If there is a freestanding sign on the site, then one sq.ft. of sign area per linear foot of building wall that fronts street is allowed.



Typical Section

Scale: NTS

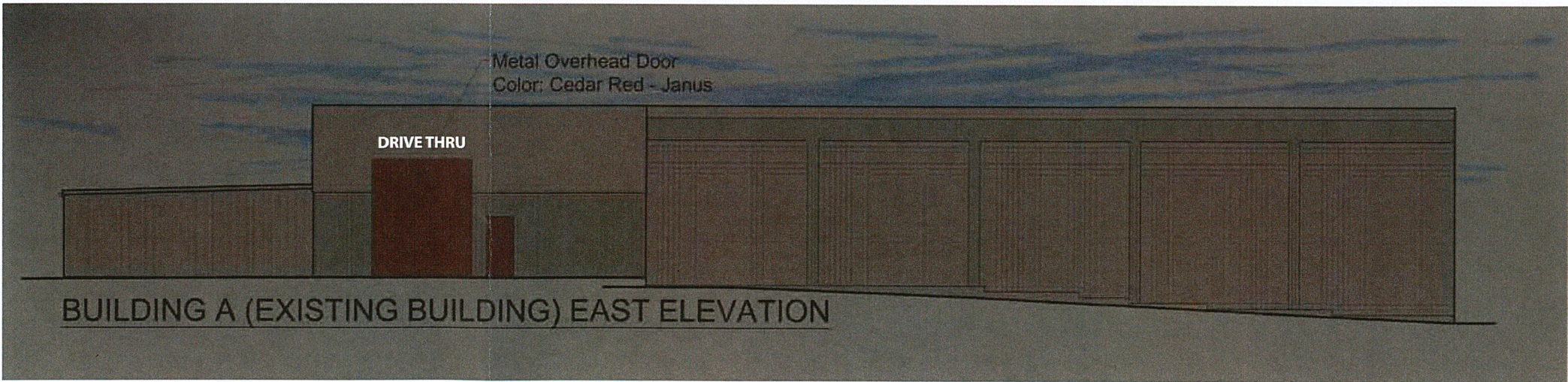
10'-2 1/2"

1'-4" DRIVE THRU

Sign Area = 13.61 sq. ft.

Sign Details

Scale: 1" = 1'-0"



Signdealz
2301 Blake Street
Denver, CO 80205

1-800-405-0686

CUSTOMER NAME: Budget Store & Lock	
PROJECT NAME: Sign Package	
LOCATION: 1420 NY-300, Newburgh, NY 12550	
OPPORTUNITY / P.O. NO(*): OP-KS-008617	SALES: Kirk Stateson
DATE: 10/15/2024	

DESIGNER
KP
PAGE 16

APPROVAL:

Customer Signature (legible)

(X)

Approval Date:

5 YEAR WARRANTY
ALL PARTS, LABOR & SIGNAGE